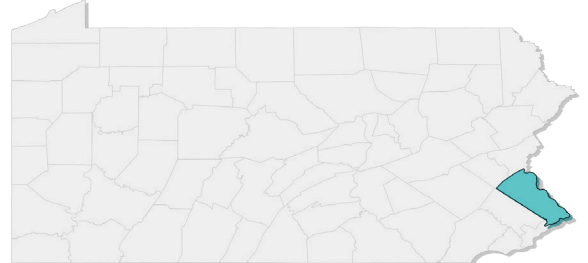


Community Climate Outlook

BUCKS COUNTY, PA

Bucks County residents will face increasingly severe weather- and climate-related hazards, such as **heat waves, flooding, and storm surge**.

As the frequency and intensity of local hazards change, it is important for all of us to protect communities and local habitats. Using the best available evidence, scientists can project how climate (long-term averages in daily weather) will change in the future, and the effects this will have on local communities.



Climate information can guide decision-making to help us plan and prepare for future weather and climate hazards. It is important that action includes areas with limited resources and people at higher risk. With justice-minded planning and preparation, Bucks County can build a resilient community for all residents and future generations.

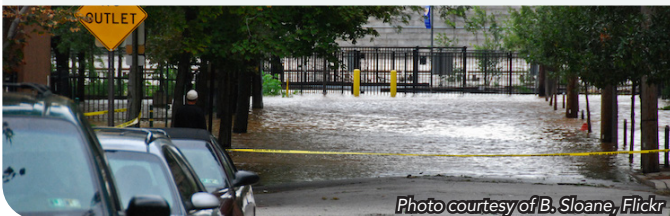
SEA LEVEL RISE



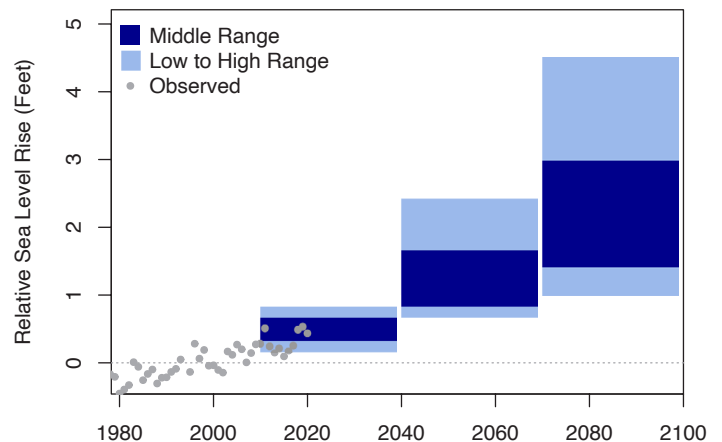
KEY MESSAGE: As temperatures warm, land ice melts and seawater expands causing sea levels to rise around the world and water levels to rise in the tidal Delaware and Schuylkill Rivers. Between 1950 and 2019, water levels near Bucks County rose roughly 0.8 feet leading to more frequent and severe flooding. Water levels will rise 0.8 to 1.7 feet above the 2000-2004 average in the next 30 years (by the 2050s), submerging property, damaging infrastructure, and pushing the salt line upriver.



FLOODING: Rising sea levels allow tides, waves, and severe flooding to push further upriver. This causes more frequent high tide flooding and increases the impacts of storm surge, putting low-lying housing, commercial property, and infrastructure at risk.



SALTWATER INTRUSION: As saltwater from sea level rise pushes further upstream, it threatens drinking water and stormwater infrastructure. Saltwater intrusion can force municipalities to abandon sources of drinking water and reduces the lifespan and performance of stormwater infrastructure.



The graph shows the projected change of sea level in feet above mean sea level relative to the 2000-2004 average. The dark blue shading shows the middle range (25 to 75% probability) and the light blue shading shows the low to high range (10 to 90% probability) of sea level rise as 30-year averages that are used for official planning purposes in the Philadelphia region. Dots show the observed changes in water level in Philadelphia.

FUTURE SCENARIOS¹: Future climate will depend, in part, on the efforts that we take today to reduce carbon dioxide emissions from the burning of fossil fuels like coal, oil, and methane gas. This fact sheet presents two scenarios¹ of future climate based on a combination of climate models scaled to Bucks County, PA. The first scenario, a higher-emissions scenario (RCP8.5), assumes continued increase of fossil fuel emissions, with no mitigation. The second, a lower-emissions scenario (RCP4.5), is a scenario where we tackle the issue of emissions head-on by responsibly using our natural resources and implementing strategies that begin to reduce global fossil fuel emissions by 2050, stabilizing carbon dioxide concentrations before 2100.

Access resources for adaptation, data references, and additional outlooks by visiting: marisa.psu.edu/outlooks



CHANGING TEMPERATURE PATTERNS



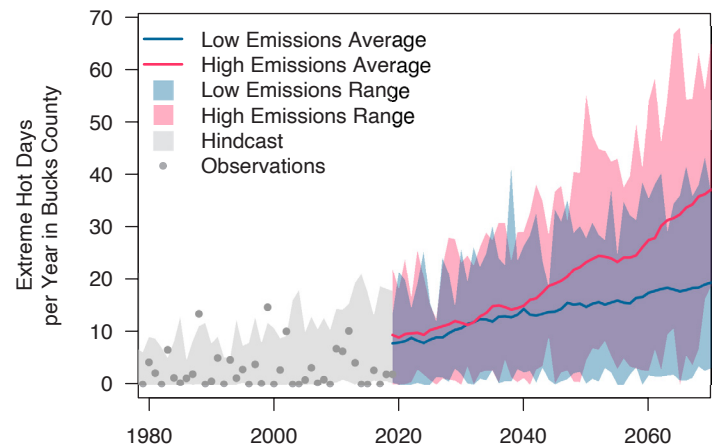
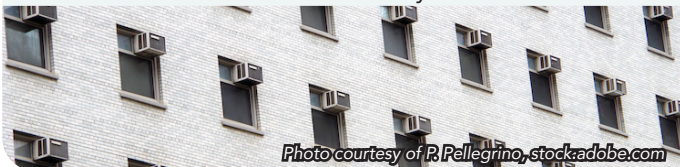
KEY MESSAGE: Human health and infrastructure are all threatened by higher temperatures. At 95°F, it is hard to keep indoor areas and our bodies cool. Bucks County's summers are getting hotter and this is intensified by the Heat Island effect³. On average, Bucks County sees 3 days per year with temperatures above 95°F (1990-2019 average). Within the next 50 years (by 2070), Bucks County can expect a yearly average of 19 to 37 days above 95°F, with associated increases in cooling costs, reduced air quality, and heat-related illnesses.



HEAT-RELATED ILLNESSES: Heatwaves can kill people and pets. In Pennsylvania, more than 80 people have died from extreme heat between 2010 and 2019. Individuals at higher risk include children, pregnant women, older adults, outdoor workers, and lower-income residents.



ENERGY USE: Heat islands³ increase the demand for air conditioning. In the US, electricity demand for cooling will increase by 5-20% for every added degree C. During heatwaves, increased demand can overload systems causing power companies to conduct rolling brownouts or blackouts to avoid system failure.



The graph shows the number of days in a year with temperatures above or equal to 95°F. Dots represent observed annual days of extreme temperatures and the gray shading shows the hindcast². Two scenarios¹ of the future are shown as a high-emissions scenario (RCP 8.5) in red and a low-emissions scenario (RCP 4.5) in blue. Data for the future scenarios¹ are retrieved from Multivariate Adaptive Constructed Analogs (MACA), and observed data are from the Gridded Surface Meteorological Dataset (gridMET).

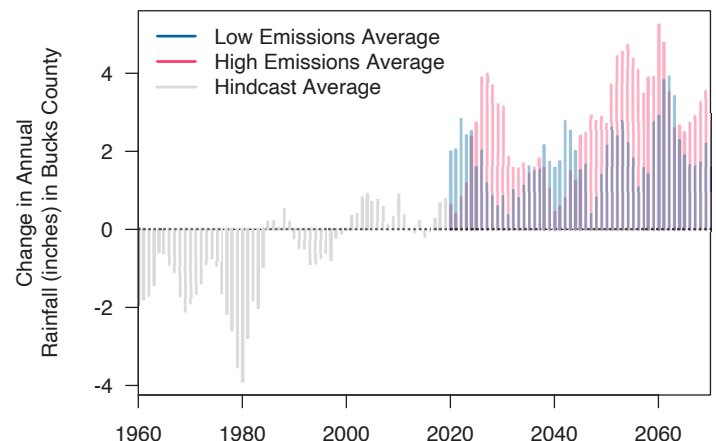
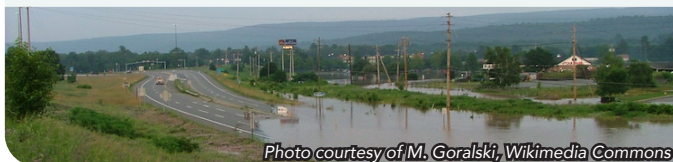
CHANGING RAINFALL PATTERNS



KEY MESSAGE: Heavy rainfall in Bucks County is increasing in frequency and intensity, causing flash floods, property damage, septic backups, mold and indoor air quality issues, and impacts to water quality in the Delaware and Schuylkill Rivers. Annual rainfall in Bucks County will likely increase by an average of 2 to 4 inches (2050-2079 average compared to the 1990-2019 average).



FLOODING: High concentrations of pavement and infrastructure intensify flooding because they prevent rainwater from seeping into the ground. Heavy rain can quickly overwhelm infrastructure and drainage systems. It can quickly cover streets causing traffic to slow and become deadly to drivers.



The graph shows the change in annual rainfall compared to the average between 1990 and 2019. The gray lines show the hindcast². Two scenarios¹ of the future are shown as a high-emissions scenario (RCP 8.5) in red and a low-emissions scenario (RCP 4.5) in blue. Data for the future scenarios¹ are retrieved from MACA.



REDUCED HUMAN HEALTH: Changing moisture levels impact the spread of mold and illness, including tick- and mosquito-borne diseases as high humidity promote their reproduction and how far they can travel.

FOOTNOTES:

¹ Scenarios are a plausible representation of future events. They are not predictions or forecasts, but they offer insight into the implications of developments and actions.

² Hindcasts are model results for a historical period. Hindcasts are useful for comparing observations with model estimates.

³ Heat islands are urban areas where temperatures are higher than the surrounding areas due to high concentrations of infrastructure and limited green space.